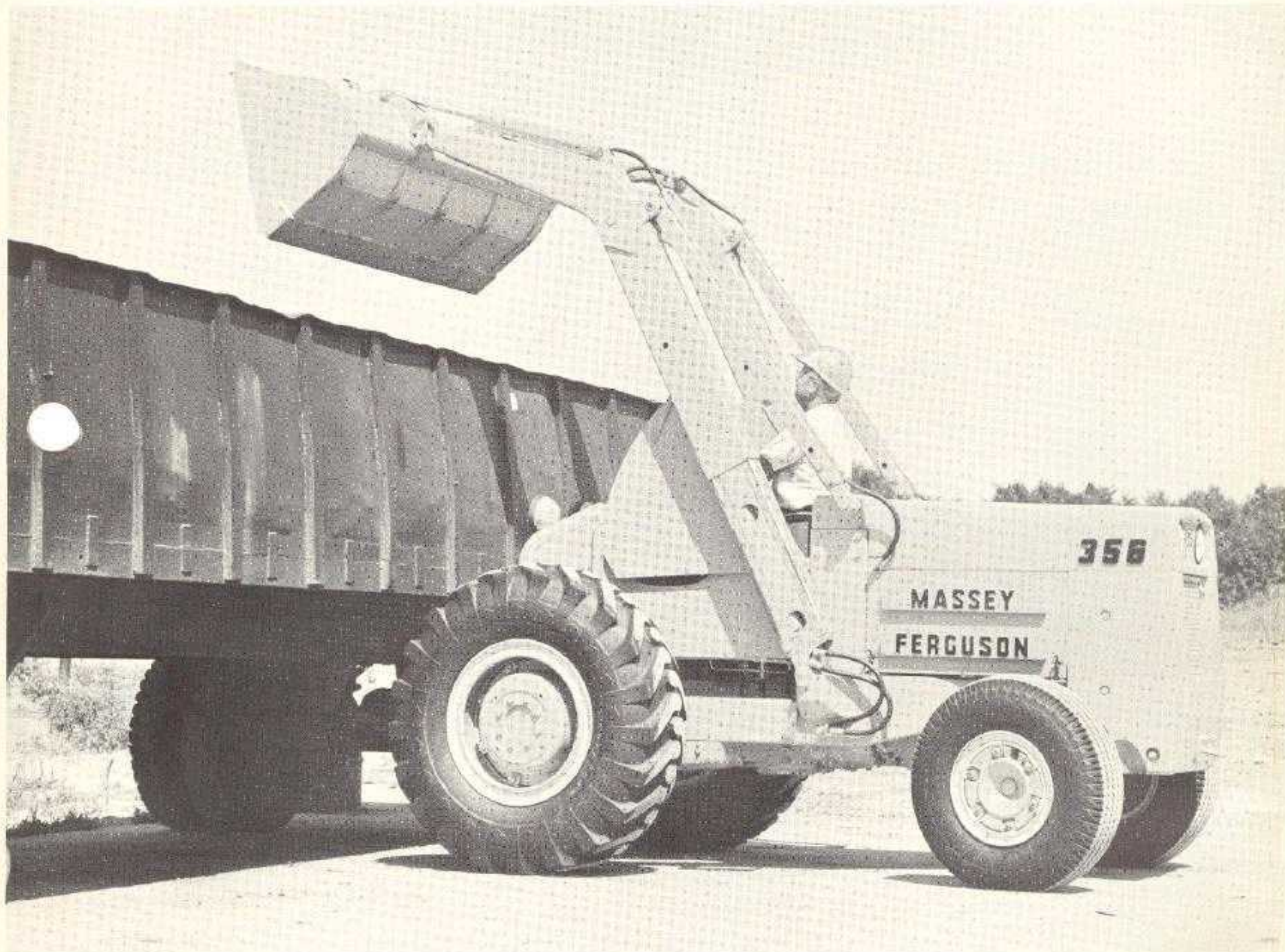




MF INDUSTRIAL
& CONSTRUCTION
MACHINERY

MF 356 TRACTOR SHOVEL



Built to meet "most wanted specifications" in its power class
Has ability to dig harder, load faster & move more material in a day

PLUS:

- Gas or Diesel Power
- Instant Reverse Transmission
- Simple & Functional Design
- Quality Construction
- Power Steering Standard
- Hand and Overriding Foot Throttle

MF 356 TRACTOR SHOVEL ENGINEERING SPECIFICATIONS

LOADER

Bucket: 75" - SAE 1 yd. capacity. Optional 80" - 1 1/2 yd. light material.

Bucket Level Indicator: Adjustable Standard

Lift: 5000 lbs. to full height.

Cycle Time: Raise (Loaded) 5 secs. lower 3.5 secs.

Hydraulic Controls: Two lever w/raise, lower, float and self level provided in boom spool. Bucket control on individual spool for increased bucket action response.

Hydraulic System: Gear type pump 2.5 GPM @ 2000 rpm. Replaceable cartridge type oil filter. Selective hydraulic self leveling.

Loader Boom: Telescoping boom of pressed steel box sections with two duplex chrome shaft 3" double acting lift & two duplex chrome shaft 3 1/2" double acting bucket cylinders. Operator safety shields raise & lower with loader boom.

Full Box Frame: Attached to drive axle.

OPERATOR COMPARTMENT

Seat: Foam float, adjustable fore & aft with waterproof upholstery.

Instrumentation: Fuel, ammeter, engine oil pressure, water temperature, torque converter, oil temperature gauges, tachometer, hour indicator, dashlight & cigarette lighter.

DRIVE TRAIN

Transmission: Four speed foot pedal activated fully automatic with torque converter and Instant Reverse (Travel speeds 0 - 19 MPH).

Brakes: individual foot operated double acting 7" disc. May be operated simultaneously for safe braking action. Parking brake latch lock standard.

Final Drive: Spiral bevel differential with planetary at drive wheels for total final reduction.

Steering Axle: Heavy duty cast one piece. Oscillates 11° for smooth operations over rough terrain.

Steering: Hydrostatic, full power with 2 double acting no back lash cylinders. Three turns stop to stop steer ratio.

ENGINE

***Gas:** Low rpm, high torque 4 cylinder, 193.3 cubic inch 61.5 hp (with all standard accessories) @ 2200 governed rpm. Develops 176 ft. lbs. torque @ 1200 rpm.

***Diesel:** Low rpm, high torque 4 cylinder, 203.5 cubic inch, 59.5 hp (with all standard accessories) @ 2200 governed rpm. Develops 166 ft. lbs. torque @ 1200 rpm.

*IEMC Rating.

Throttle: Locking hand with foot throttle on forward & reverse directional pedals.

Lights: Two flood forward, two rear.

Tires: Drive: 14.00 x 24 - 8 ply Grader

Steer: 9.00 x 15 - 8 ply Hi Milers

OPTIONAL EQUIPMENT

Tires: 14.00 x 24 - 12 ply Grader

Buckets

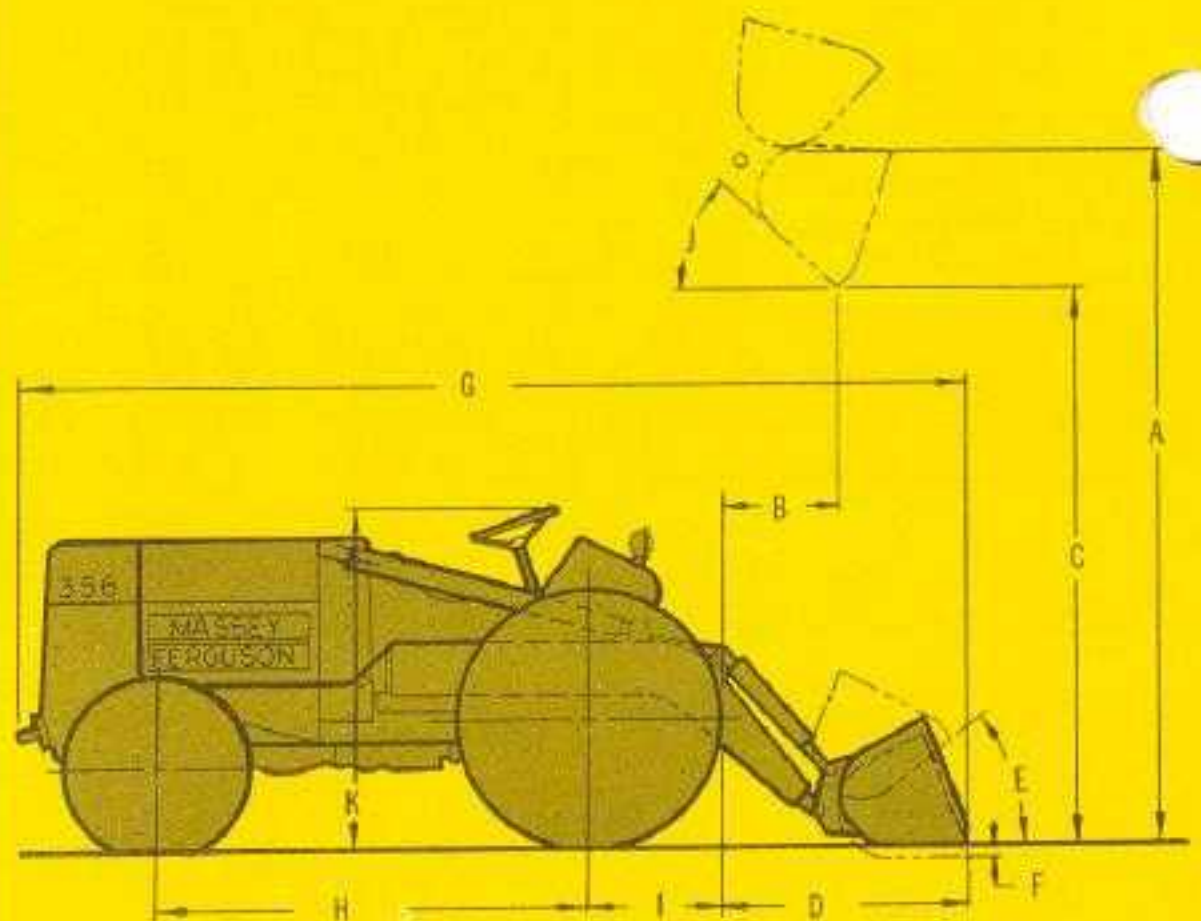
Forklift attachment w/ tines

Bucket teeth

All weather cab

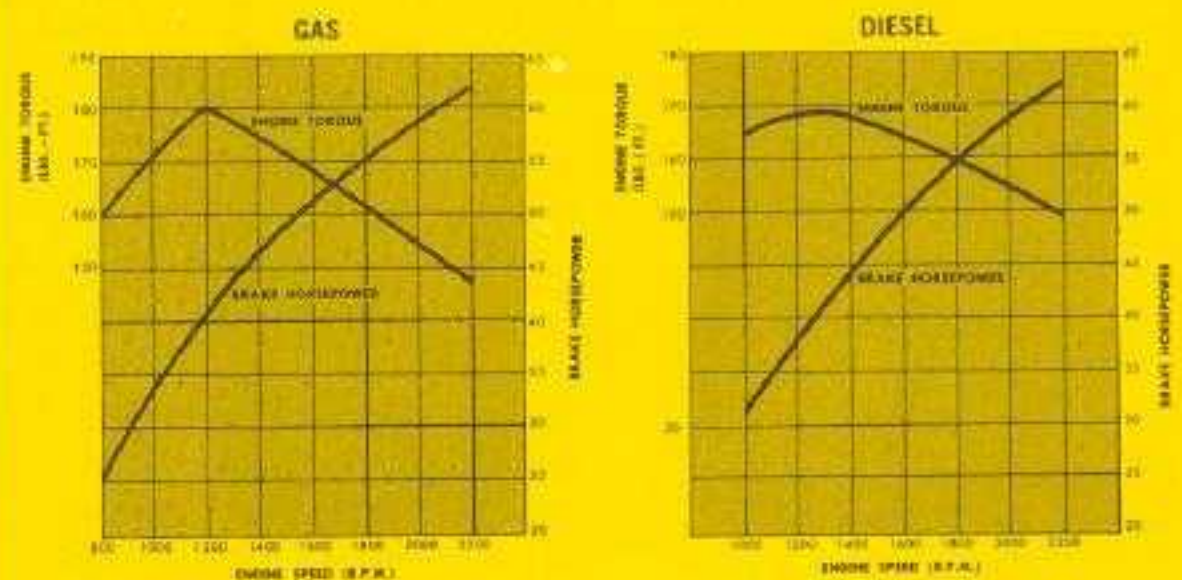
Shipping Weight (Approximately):

Gas 10,700 lbs. Diesel 10,900 lbs.



A	B	C	D	E	F	G	H	I	J	K
132 1/2"	24"	107"	50 1/4"	35"	1 1/2"	185 1/4"	84-3/32"	26"	39"	69"

ENGINE PERFORMANCE (Average Production Performance)



Massey-Ferguson reserves the right to make changes in design or to add improvements to its products without incurring any obligation on goods purchased prior to such changes or improvements.



**MF INDUSTRIAL
& CONSTRUCTION
MACHINERY**

Massey-Ferguson Inc.
Akron, Ohio

1201/1267-25-1
PRINTED IN U.S.A.